

CAREpoint Workstation

Application Note: 183V038A

Title: Checking CAREpoint Automatic Updates Status

Overview: This procedure will describe how to check the status of the CAREpoint Automatic Updates feature.

Applicability: All CAREpoint Workstations

Execution:

- 1) On the blue, on screen keypad in the upper right corner of the main CAREpoint window, enter #ABOUT (#-2-2-6-8-8) to open the “About GD CAREpoint” window.



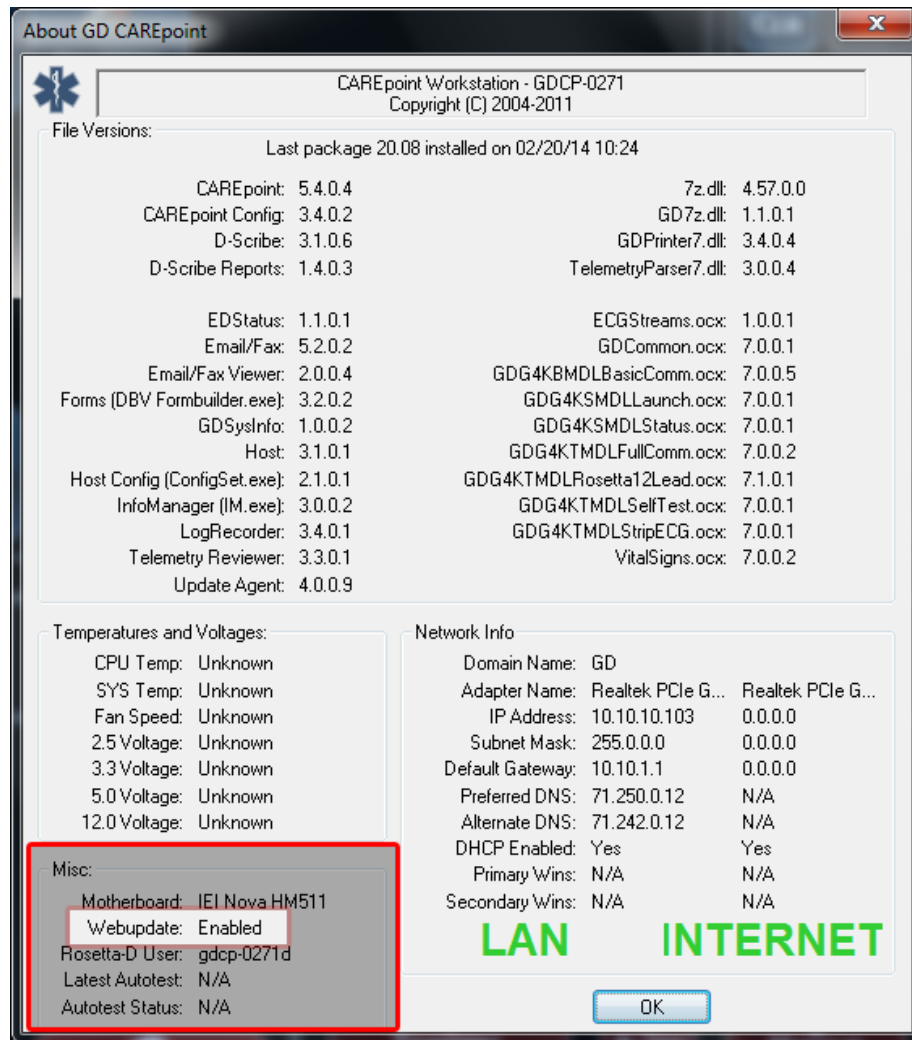
(Blue, on screen keypad)

(Continued on Next Page)

CAREpoint Workstation

Application Note: 183V038A

- 2) In the “About GD CAREpoint” window look for the Misc section in the lower left corner. There it will give the status of “Webupdate”. It will be either Enabled or Disabled. If it is Disabled and you would like to enable it, please contact General Devices Tech Support at 201-313-7075 for assistance. General Devices recommends that this feature is enabled to ensure the latest software is always installed on your CAREpoint Workstation.



NOTE: The “About GD CAREpoint” window may look different depending on what CAREpoint version the system is.

End Procedure