

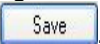
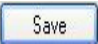
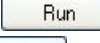
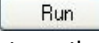
Changing Rosetta-Lt Configuration Settings Using EZ-Set

Requirements:

- Rosetta-Lt with firmware version 0.88 or later
 - A good 9V battery installed in the Rosetta-Lt
 - Rosetta-Lt Programming Cable (P/N: 034-184-201A)
 - PC or laptop with an available “Serial” (RS-232) port (DB9 Male Connector)
- Note: Serial ports from some laptops and converters/adapters may not work properly with Rosetta-Lt. Use a standard desktop PC with a serial port if necessary.

1) Download and Install the EZ-Set Program

If “EZ-Set for Rosetta LT” software is already installed in your PC or laptop, skip to step 2.

- a. Go to www.general-devices.com, click on “Support Center”, click on “Drivers & Software”, click on “Rosetta-Lt”, and click the link “Rosetta-Lt EZ-Set Software” located under the “Utilities” section of this page. This will bring the File Download – Security Warning window.
- b. Click , choose the desired location to save the file and click . This will bring up the download window showing the download progress bar.
- c. When the download completes, click on . This will bring up the Internet Explorer – Security Warning window. Click on .
- d. The software will unzip and install automatically. **Note:** This will not start the software, it will be started in a later step.

2) Setting Rosetta-Lt to Program Mode

- a. Make sure the unit is NOT connected to the monitor/defibrillator.
- b. Remove the battery compartment cover, disconnect and remove the 9V battery.
- c. Locate the two DIP switches visible in one corner of the battery compartment. Using a ball point pen or similar tool, slide DIP switch 2 to the OFF position (towards the inside of the Rosetta-Lt).



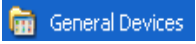
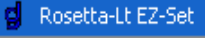




- d. Reconnect and install the 9V battery (be careful not to stretch or pitch the wires).
- e. Reinstall the battery compartment cover.

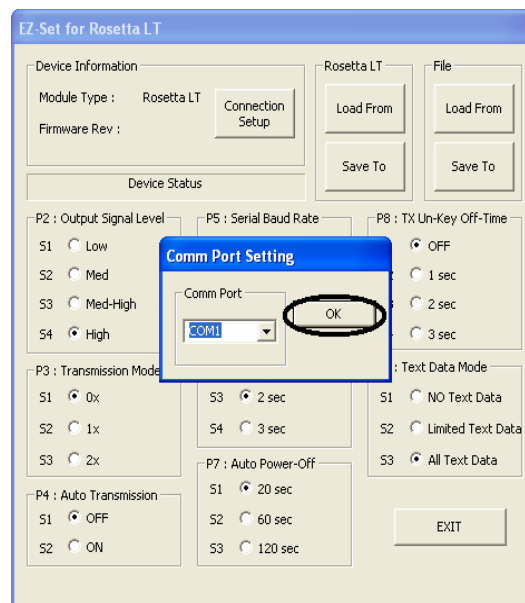
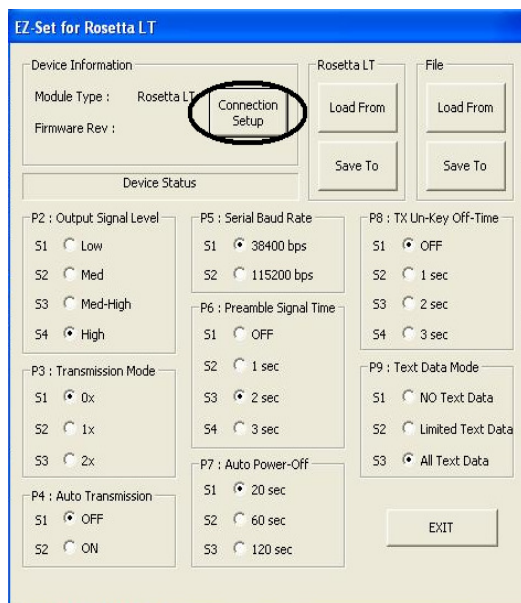
3) Connect the Programming Cable (DB-9 Female to RJ12 Serial Data Cable)

- a. Connect the female DB-9 end of the Programming Cable to an available serial port on your PC or laptop.
- b. Connect the RJ-12 end of the Programming Cable to the “Monitor” jack on the Rosetta-Lt.

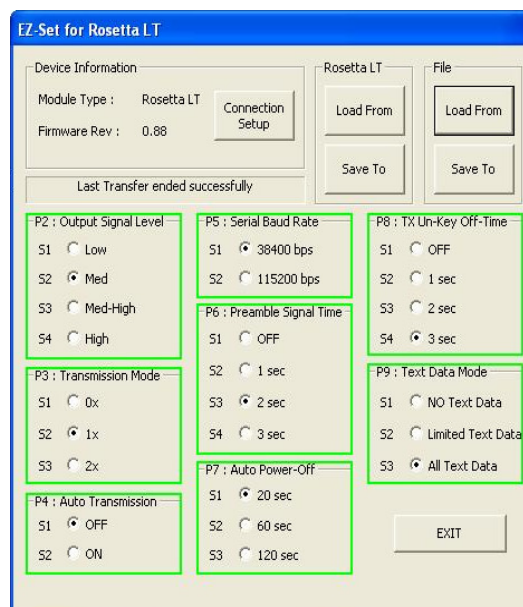
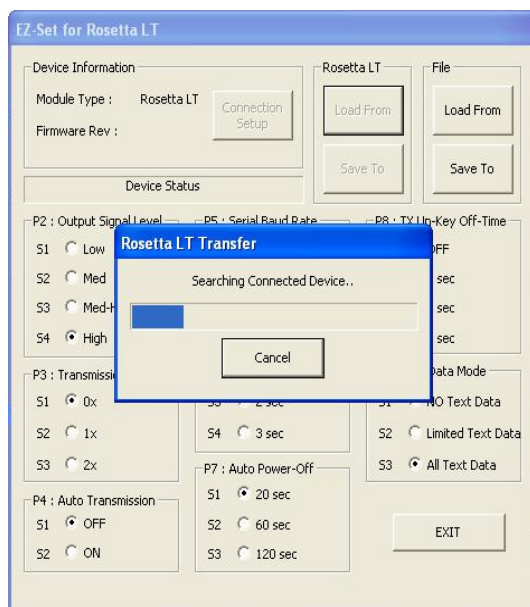
4) Changing Configurations Settings

- a. Click on  menu located in the lower left of the screen, ,  and click  to open up the program. **Note:** If a “Comm 1 Port is not available” box appears, click OK and proceed to the next step.

- b. Click on . When the Comm Port Setting window appears, select the Comm Port that the Programming Cable is connected to and then click . **Note:** If you do not know the Comm Port number, try Comm Port 1 first.



- c. **Load from Rosetta-Lt:** To load the current Configuration Settings from the Rosetta-Lt into the EZ-Set software, click the “Load From” button in the Rosetta LT section. The Rosetta-Lt will turn on, the Tx/Rx LED will be solid amber and the power LED will blink amber indicating that the configuration file is being uploaded to the PC or laptop. The Rosetta LT Transfer window will appear while the configuration file is being uploaded to the PC or laptop. When the configuration file is successfully uploaded, there will be green boxes around each configuration setting and a message that says “Last Transfer ended successfully” will appear. **Note:** If the program stays at the Rosetta LT Transfer window for more than 1 minute, refer to **Appendix A – Troubleshooting** at the end of this procedure.



Change the desired Configuration Settings. For more details about each setting, refer to the Rosetta-Lt User's Manual. **Note:** The Rosetta-Lt User's Manual can be downloaded from www.general-devices.com. Click on "Support Center", click on "Product Support", click on Rosetta-Lt, and click the link "Rosetta-Lt User's Manual" under the "User's Manual" section of this page.

Save To Rosetta-Lt: To save the Configuration Settings on the screen to the Rosetta-Lt, click the "Save To" button in the Rosetta LT section. The Rosetta-Lt will turn on, the Tx/Rx LED will be solid amber and the power LED will blink amber indicating that the configuration file is being downloaded to the Rosetta-Lt. The Rosetta LT Transfer window will appear while the configuration file is being downloaded to the Rosetta-Lt. When the configuration file is successfully downloaded, there will be green boxes around each configuration setting and a message that says "Last Transfer ended successfully" will appear.

For information about Loading and Saving Configuration Settings to a file, refer to **Appendix B – Loading and Saving Configuration Settings to a File.**

- d. Once you have saved the configuration changes to the Rosetta-Lt, click on

A rectangular button with the word "EXIT" centered on it.


5) Exiting the Rosetta-Lt from Program Mode

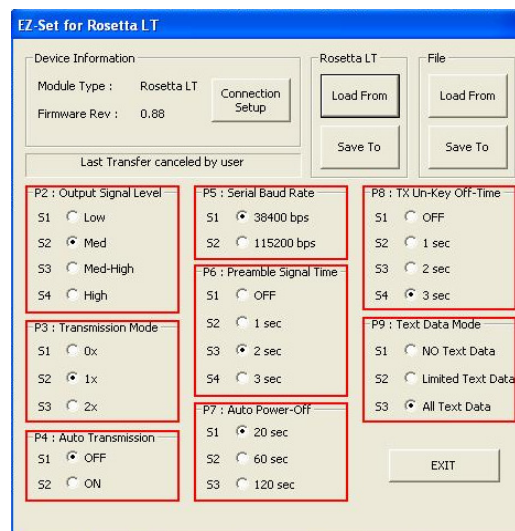
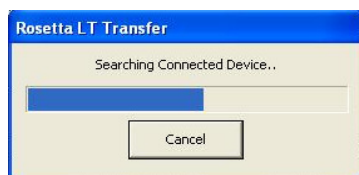
- a. Remove the battery compartment cover, disconnect and remove the 9V battery.
- b. Locate the two DIP switches visible in one corner of the battery compartment. Using a ball point pen or similar tool, slide DIP switch 2 to the ON position (towards the outside of the Rosetta-Lt).




- c. Reconnect and install the 9V battery (be careful not to stretch or pitch the wires).
- d. Reinstall the battery compartment cover.

Appendix A – Troubleshooting:

- If none of the LED's on the Rosetta-Lt turn On and the Rosetta LT Transfer window below stays there for more than 1 minute,
 - click  (red boxes will appear around each configuration setting and a message that says “Last Transfer cancelled by user” will appear). Verify that the Programming Cable is plugged in to both the PC and the Rosetta-Lt Monitor jack. Also verify that the Rosetta-Lt battery is connected. If so, go back to Step 4b and choose a different Comm Port and repeat Step 4c. If this step continues to fail, repeat with each remaining Comm Port.




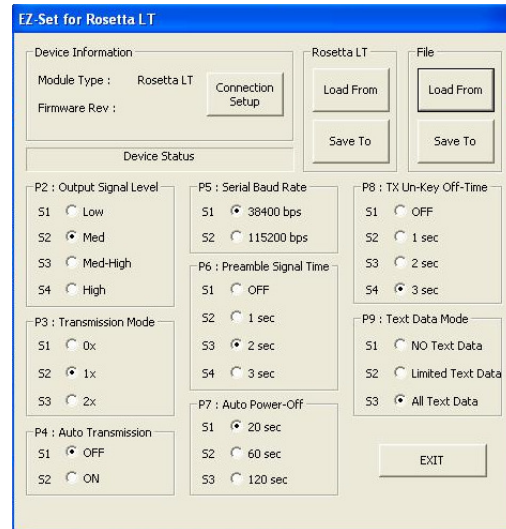
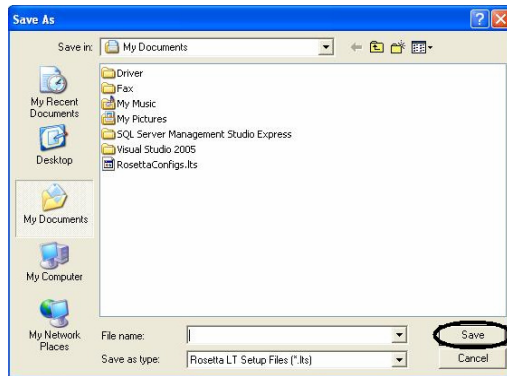
- If none of the available Comm Ports work, try using another PC – some may have low RS-232 levels.
- If you see the power LED on the Rosetta-Lt turn On red and the Rosetta-Lt Transfer window stays there for more than 1 minute,
 - click  (red boxes will appear around each configuration setting and message that says “Last Transfer cancelled by user” will appear). Verify that DIP switch 2 is in the correct position. If so, unplug the Programming Cable from the Rosetta-Lt and verify that the firmware version is 0.88 or later. Previous versions do not have the ability to change Configuration Settings using the EZ-Set software. Refer to the Rosetta-Lt User's Manual for information on determining the firmware version. **Note:** The Rosetta-Lt User's Manual can be downloaded from www.general-devices.com. Click on “Support Center”, click on “Product Support”, click on Rosetta-Lt, and click the link “Rosetta-Lt User's Manual” under the “User's Manual” section of this page. Return DIP switch 2 to its original position.


If you need additional assistance, contact General Devices Tech Support at (201) 313-7075 (9:00AM – 5:00PM EST) or visit the Support Center section of the GD web site at www.general-devices.com.

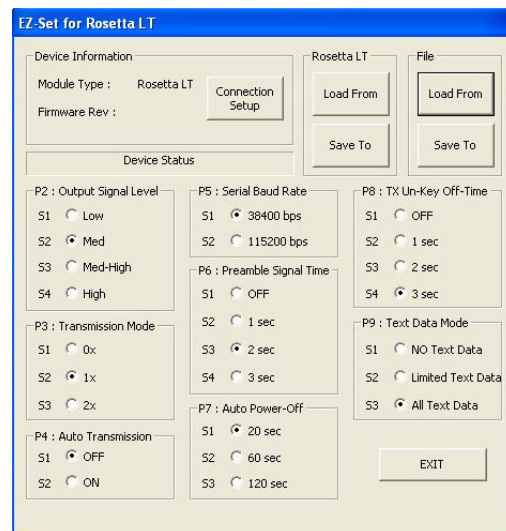
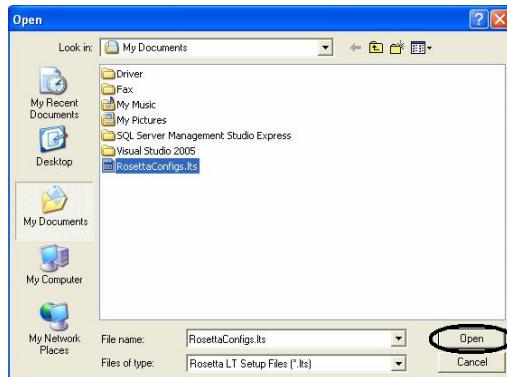
Appendix B – Loading and Saving Configuration Settings to a File

It may be useful to save the Configuration Settings to a file on the PC. These settings can then be saved to a different Rosetta-Lt at another time.

Save To File: After changing the Configuration Settings to the desired settings, you can save them to a file on the PC by clicking the “Save To” button in the File section. The Save As window will appear; choose the desired location to save the file to, then click on . The configuration settings will be saved in the chosen location.



Load from File: To load Configuration Settings into the EZ-Set software from a file on the PC, click the “Load From” button in the File section. The Open window will appear; browse to the location of the Configuration Settings file, then click on . The uploaded configuration settings will appear on the EZ-Set for Rosetta LT window (the configuration boxes will not turn green). These settings can now be saved to a Rosetta-Lt.



End