


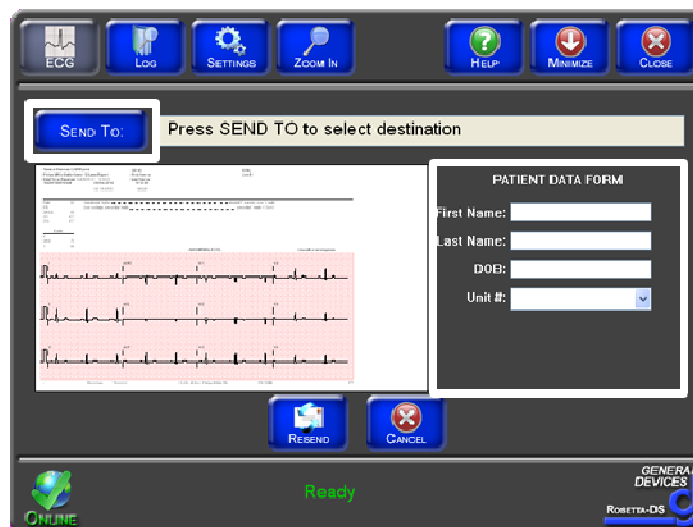
## Quick Guide #9B: Sending a 12-Lead from Rosetta-DS to Destinations

1. Once the 12-Lead has been sent from the monitor, it will be received by Rosetta-DS.




2. Once the 12-Lead has been received, you can fill out the Patient Data Form and select the destination you want to send it to. Press  to bring up a list of destinations.

**Note:** If Patient Data Form does not appear, contact General Devices Tech Support for instructions on how to enable it.

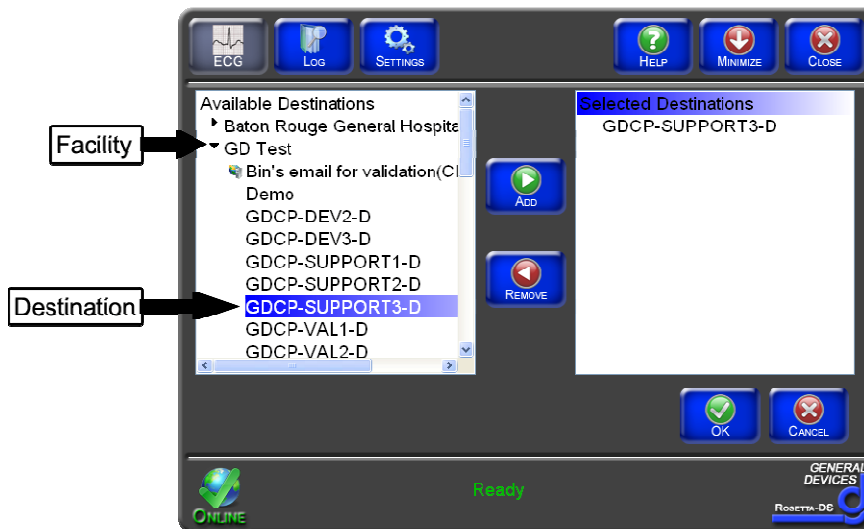



3. Select the Destination from the Available Destinations list by clicking the Facility to expand. Double click the Destination or single click the Destination to highlight it and then click the [ADD] button to add it to the Selected Destinations

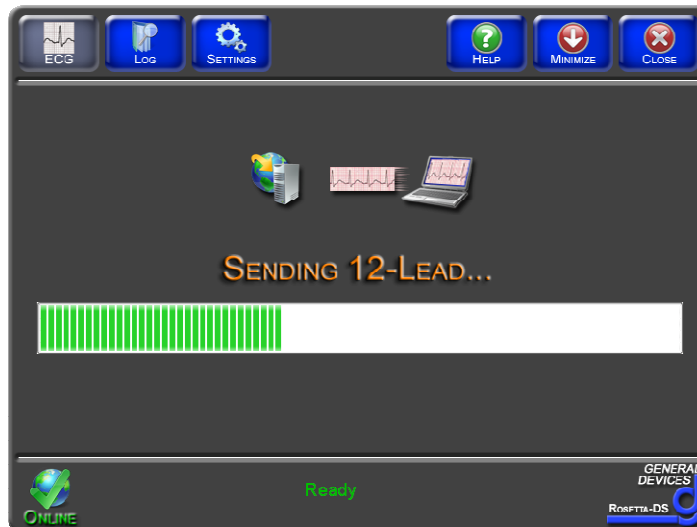
list. Repeat this for adding additional Destinations. Click the  button when you have finished adding the Destinations.

**Note:** Ctrl + Shift on the keyboard can be used to add multiple Destinations at the same time.

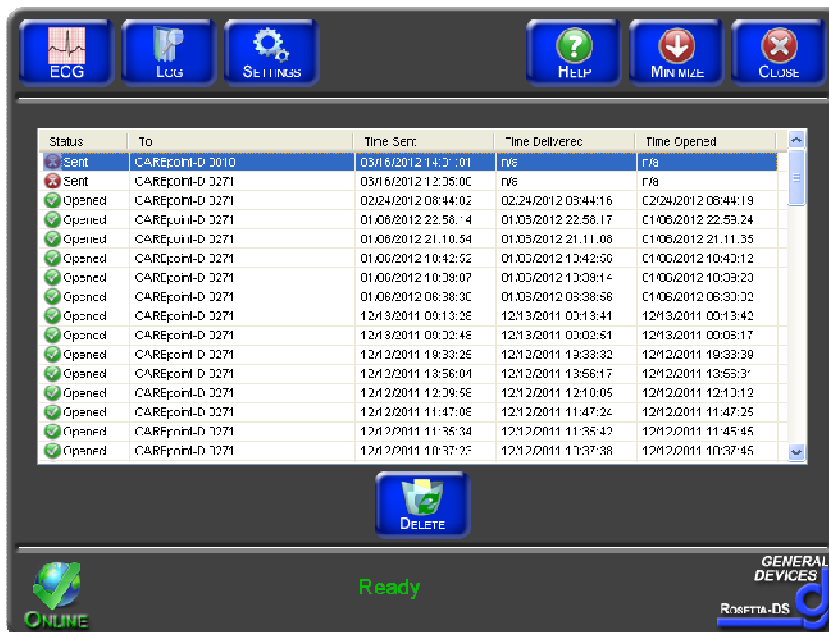
**Note 2:** Adding a Facility instead of a Destination will add **ALL** Destinations from that Facility.



4. Press the  button to send the 12-Lead to the Destination(s) selected. Rosetta-DS will send the 12-Lead.



5. Once it has been sent, a Log window will open to show the following details about the 12-Lead:
  - Status (Sent, Delivered or Opened)
  - To whom it was sent
  - Date/Time Sent
  - Date/Time Delivered
  - Date/Time Opened



**-END PROCEDURE-**