

Quick Guide #8D: Physio LIFEPAK 12/15 Configuration and Operation with Rosetta-DS

I. Configuration instructions for the Physio LP-12/15 for use with Rosetta-DS ¹

- Enter the setup menu; by pressing and holding the **OPTIONS** key and the **EVENT** key, while turning the unit **ON**.
- Enter setup mode Pass Code (typically “0000”) to get to the **Setup** Menu
- **Setup** Menu:
 - Select **Transmission...**
- **Transmission** Menu:
 - Select **Data...**³
- **Transmission/Data**⁴ Menu:
 - Select **Sites...**
- **Transmission/Data/Sites** Menu:
 - Select an unused (unnamed) Site (i.e. “Site 1...”)
- **Transmission/Data/Sites/”name”** Menu:
 - Select **Name**
 - Set the name for this site as “**ROSETTA**”
 - Select **Output Port**
 - Set to **Direct Connect**
- Go back to the **Transmission/Data**⁴ Menu:
 - Select Default Site ²
 - Set to **ROSETTA**
 - Select Default Report ²
 - Set to **12-Lead**
 - Select **Ports...**³
- **Transmission/Data/Ports** Menu:³
 - Select **Direct Connect...**³
- **Transmission/Data/Ports/Direct Connect** Menu:³
 - Select **Baud Rate**³
 - Set to **38400**³
- Go back to the **Transmission** Menu:³
 - Select **Default**³
 - Set to **Data**^{2,3}
- Go back to the main **Setup** Menu (press *Home Screen*)
 - Select **12-Lead...**
- **12-Lead** Menu:
 - Select **Auto Transmit**²
 - Set to **Data** for LP-12 or **On** for LP-15
 - Select **Format**
 - Set to **3-Channel Standard**

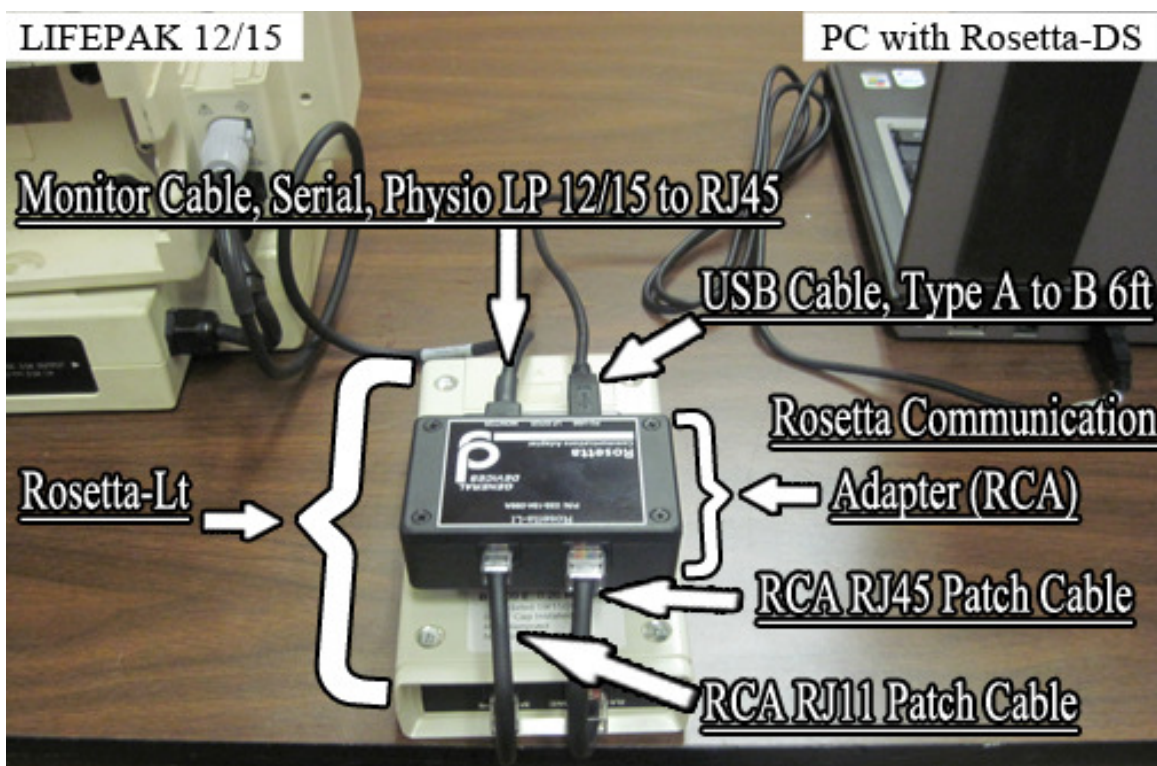
Notes:

1. Configuration settings may vary with LP-12/15 software version

2. These settings are optional, but are suggested (when they do no conflict with settings for other transmission sites or devices), to simplify operation by minimizing the number of key presses required on the LP-12/15.
3. On the LP-15, this setting does not exist. Proceed as though this step was completed
4. On the LP-15, there is no Transmission/Data menu. It is just the Transmission menu.

II. Connecting Physio LIFEPAK-12/15 to PC with Rosetta-DS

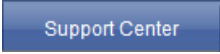
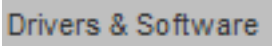



1. Connect the LP-12/15 monitor to the computer with Rosetta-DS by using the Rosetta-Lt with Rosetta Communications Adapter (RCA) as shown below.



2. Connect both the RCA RJ11 Patch Cable and the RCA RJ45 Patch Cable from the Rosetta-Lt to the Rosetta Communication Adapter (RCA).
3. Connect the USB cable (Type A to B) from the computer to the RCA.
4. Connect the Monitor Cable (Serial, Physio LP12/15 to RJ45) from the LP-12/15 Monitor to the RCA.
5. Using the Velcro strip on the back of the RCA, attach the RCA to the back of the Rosetta-Lt as show above.

Note: The Rosetta-Lt with RCA can remain connected to the LP-12/15 via the Monitor cable. It can be stored in an open pouch in the LP-12/15 case. The USB cable can remain connected to the RCA and then be plugged into the computer with Rosetta-DS when necessary.

III. Downloading and installing the RCA driver

1. Go to www.general-devices.com.
2. Hover the mouse pointer on .
3. Click .
4. From the list of products, select **[Rosetta-DS]**
5. Click the Rosetta Communications Adapter (RCA) Driver to begin the download.
6. Click the  button and choose the destination to save it in.
7. Once it is saved you can choose to  or  to run it from the destination it was saved in.
8. A Command Prompt window may appear and then disappear.

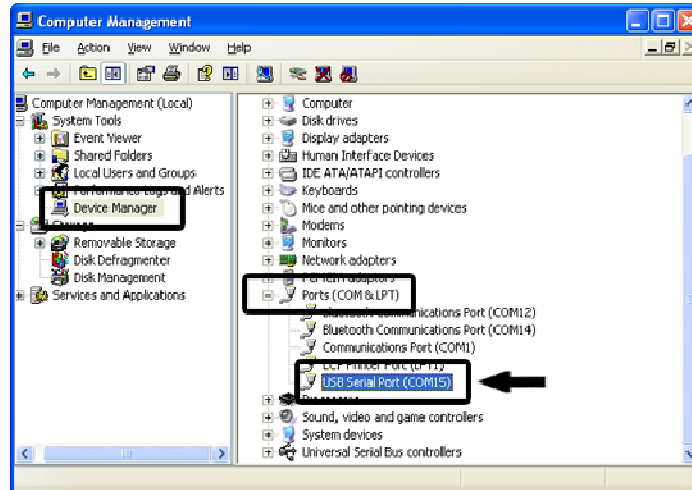
Note: You will need to run the CDM20802_Setup.exe from the destination folder a 2nd time for it to completely install.

(Continued on next page)

IV. Configuring instructions for Rosetta-DS for use with Physio LP-12/15

Note: Computer must have an available USB Port.

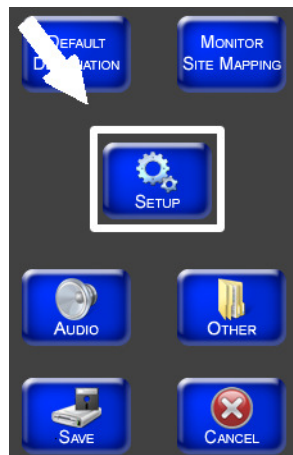
1. To identify what Comm Port the RCA is assigned, right click My Computer and go to Manage. Then open Device Manager, scroll down to Ports (COM & LPT). Plug in the USB cable (Type A to B) from the RCA into the computer and a new Comm Port will appear labeled USB Serial Port (COM X) where X is the Comm Port # assigned to the RCA. Make a note of this Comm Port #.



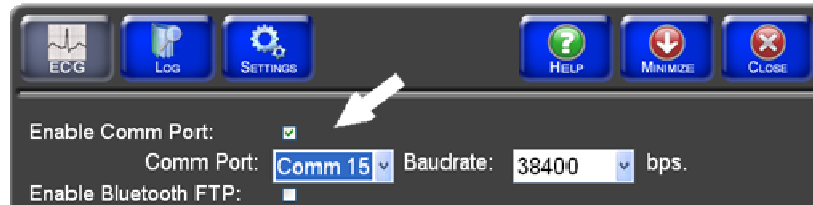
2. Launch Rosetta-DS. At the main screen of Rosetta-DS click the [Settings] button. A password box may appear. The default password is “GDrosetta”.








3. Next click the [Setup] button.



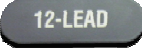
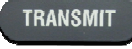

4. Check the Enable Comm Port checkbox, select the Comm Port (determined above) and set the Baudrate to 38400.



5. Click the  button.
6. To complete the step, click the  button, then click .
7. Click the  button at the top right of the Rosetta-DS window, then click .
8. Restart Rosetta-DS by double clicking the shortcut on the desktop.

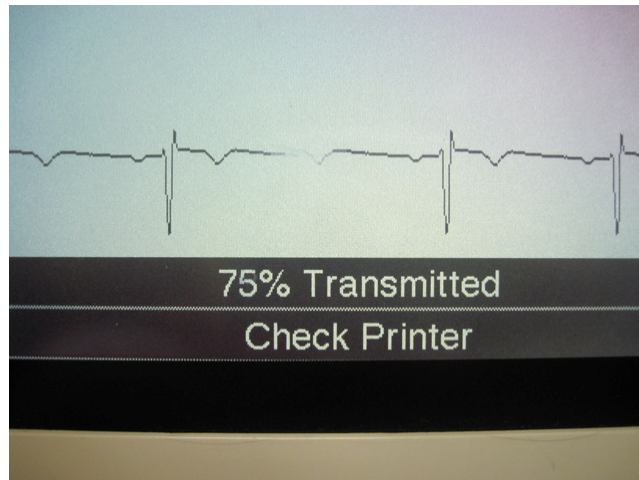
IV. Acquiring and Sending a 12-Lead from the Physio LP-12/15 to Rosetta-DS

Note: Rosetta-DS **must** be running on the PC before trying to transmit from the LP-12/15.

1. Press the  button.
2. Enter Age and Sex as prompted.
3. If Auto Transmit was enabled in the LP-12/15 settings, skip to step 6.
4. If Auto Transmit was not enabled in the LP-12/15 settings, press the  button. Select the appropriate report (if necessary).
5. Select .

(Continued on next page)

6. The 12-Lead will transmit from the LP-12/15 to the Rosetta-Lt and the Rosetta-Lt will then automatically transmit the 12-Lead into the computer with Rosetta-DS.



See Quick Guide #9: Sending a 12-Lead from Rosetta-DS to Destinations

-END PROCEDURE-