

Quick Guide #3G: Philips MRx Configuration and Operation with Rosetta-DS (Bluetooth Connection)

I. Configuration instructions for Philips MRx for use with Rosetta-DS via Bluetooth

- Required settings:
 - Hub Server URL: 0.0.0.0
 - Site Name: ROSETTADS
 - Site Type: Hub
 - MRx monitor must have 12-Lead Option, Event Summary Bluetooth Option and 12-LTx Bluetooth Option. See Appendix A at the end of this document for instructions to check for the required options.
- Entering System Configuration
 - Go to Menu > Other > Configuration
 - Hit Acknowledge. The monitor will restart in Configuration mode.
- Enter Passcode
 - Go to Change Config
 - The default password is 387466. It may be different on your monitor. Contact your EMS administrator if you do not know the password.
- Changing Settings
 - Press Menu
 - Select Data Transmission (may be called 12-Lead Transmission in older software)
 - Select Hub
 - Enter 0.0.0.0 for Server URL. **Note:** If an address is already listed for the Server URL, do NOT change it to 0.0.0.0.
 - Press Next Screen button to get to Sites screen
 - Select Add Site
 - Type in “ROSETTADS” as the Site Name
 - Press Next Item
 - Select “Hub” as the Site Type
 - Press Next Item until you get to Default Site
 - Select “Yes”
 - Press Main Config
 - Press Save Changes
 - Press Exit Config. Allow the unit to restart.
 - Press Menu
 - Go to Other > Bluetooth Devices > Add Device
 - Select the name of the Bluetooth Adapter associated with your computer w/Rosetta-DS
 - Enter a key (usually 0000)
 - The device will attempt to pair with your computer. On the computer, enter the key from the last step.

- The MRx will run a connection test. If the pairing was successful, it will report “Passed”.
- Press Acknowledge

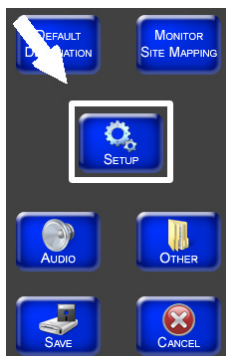
II. Configuration instructions for Rosetta-DS for use with Philips MRx via Bluetooth

Note: Computer must have a Bluetooth module that supports Bluetooth FTP protocol.

1. Launch Rosetta-DS. At the main screen of Rosetta-DS click the [Settings] button. A password box may appear. The default password is “GDrosetta”.




2. Next click the [Setup] button.



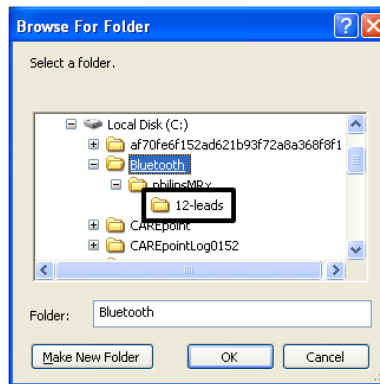
3. Check the Enable Bluetooth FTP checkbox.



4. Click the  button to the right of the FTP Path text field.

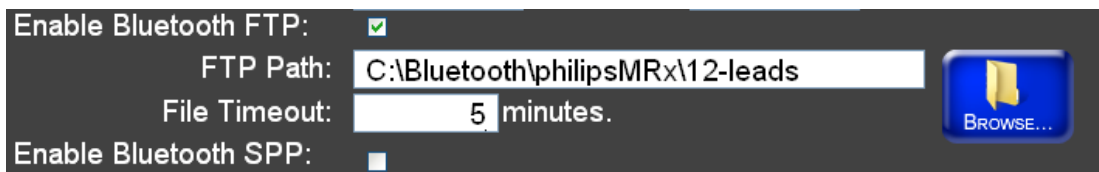
(Continued on next page)

5. Browse to the default location where Bluetooth FTP files are transferred to. Inside of this folder, open the “philipsMRx” folder and select the “12-leads” folder.








Note: For information on how to determine the default Bluetooth FTP file location, see Appendix B.

6. You should see the FTP Path where the 12-Lead will be send to.



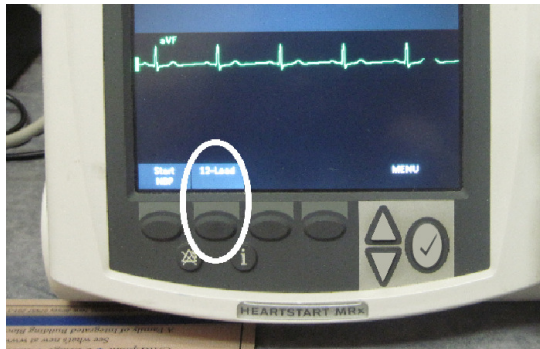
Note: File Timeout should remain at 5 minutes unless instructed to be changed by General Devices Tech Support.

7. Click the  button.
8. To complete the step, click the  button, then click .
9. Click the  button at the top right of the Rosetta-DS window, then click .
10. Restart Rosetta-DS by double clicking the shortcut on the desktop

(Continued on next page)

III. Acquiring and Sending a 12-Lead from the Philips MRx to Rosetta-DS

1. Press the **12-Lead** button to go into the 12-Lead menu.



2. Press the **Start Acquire** button to acquire a 12-Lead.



3. To send the 12-Lead to Rosetta-DS, press the **Menu** button and select **Send**.



(Continued on next page)

4. Using the arrow buttons, select **ROSETTADS** from the Send To menu.



5. The 12-Lead will begin transmitting to Rosetta-DS.



See Quick Guide #9: Sending a 12-Lead from Rosetta-DS to Destinations

-END PROCEDURE-

Appendix A

To check if the required options are present in the MRx monitor, follow these steps:

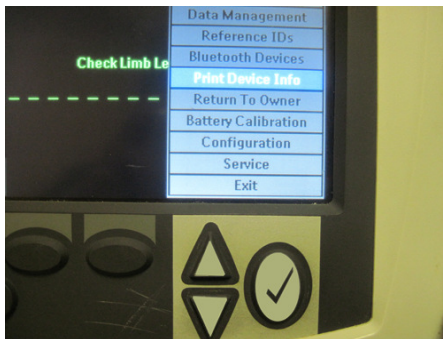
1. Go to the Menu by pressing the Check Mark button below the **Menu** at the bottom right corner of the MRx screen.



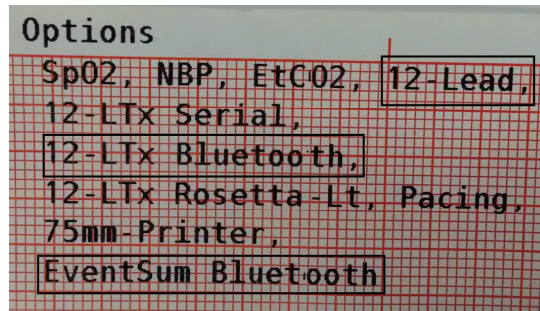
2. Scroll down using the arrow buttons and select **Other** by pressing the Check Mark button.



3. Next scroll down to **Print Device Info** and press the Check Mark button.



4. A page with all of the device information will print out. Look for the **Options** section. It should have **12-Lead**, **EventSum Bluetooth** and **12-LTx Bluetooth**.



5. Once you have confirmed the required options are present, scroll down to **Exit** and press the Check Mark button.




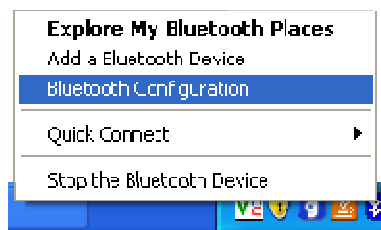
Appendix B

How to determine the default Bluetooth FTP file location

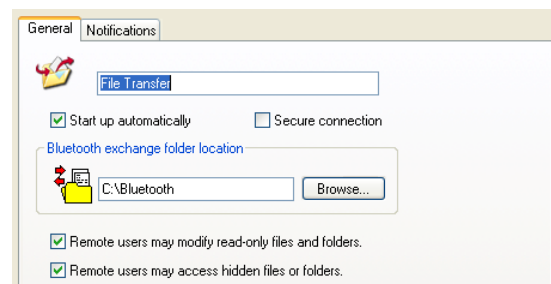
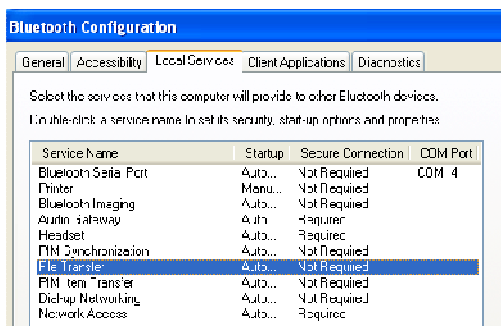
I. Widcomm Bluetooth Driver

Note: The following steps are done using Widcomm Bluetooth Driver version 5.5.0.4400. Steps may vary depending on version.

1. Right click the Bluetooth icon  in the bottom right corner of the Task Bar and click on **Bluetooth Configuration**.




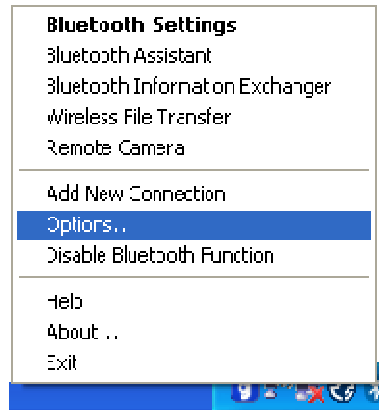
2. Click the **Local Services** tab at the top and then double click **File Transfer**. You will see the location of the Bluetooth folder.



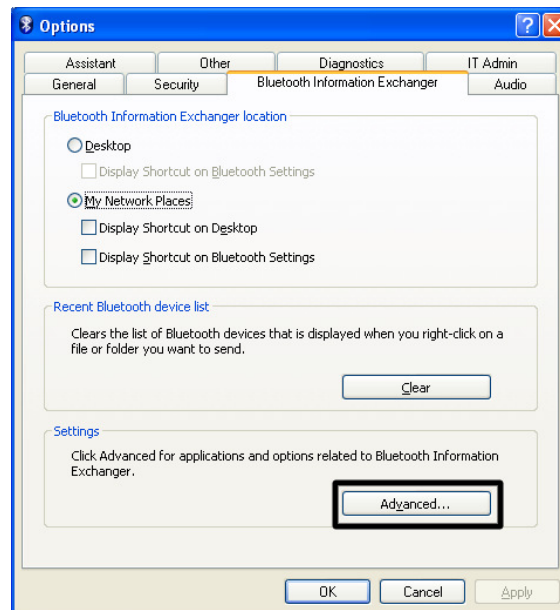
II. Toshiba Bluetooth Driver

Note: The following steps are done using Toshiba Bluetooth Driver version 7.10.09.
Steps may vary depending on version.

1. Right click the Bluetooth icon  in the bottom right corner of the Task Bar and click on **Options**.



2. Click the **Bluetooth Information Exchanger** tab at the top and then click the **Advanced** button under Settings.



3. Click the **File Transfer** tab at the top and you will see the location of the Bluetooth directory.

