

Instructions for installing Rosetta-DS

Note: This installation should be performed by a supervisor or person who has “administrator privileges” on the PC.

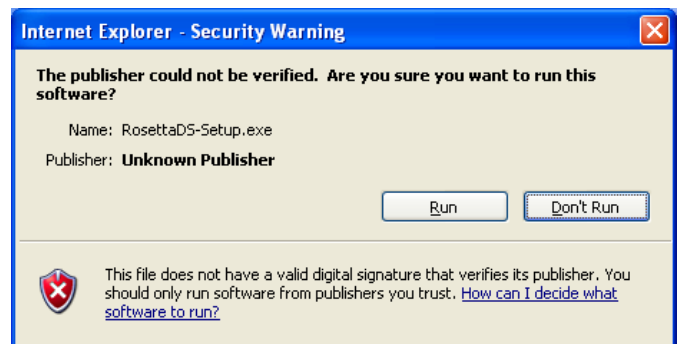
Please read and follow the instructions carefully. Installation requires only basic computer skills. Should you need assistance, General Devices’ technical support is available M-F between the hours of 9:00 AM and 5:30 PM Eastern time. It is highly recommended that installation be performed when GD tech-support is available. For assistance call (201) 313-7075 and ask for “Tech Support”.

- These instructions show how to install Rosetta-DS on a Windows XP PC. Other operating systems may vary slightly.
- FOR WINDOWS 7 AND VISTA USERS: You must have administrative privileges to install Rosetta-DS. To obtain this, instead of double clicking on the file, right-click on it and select “Run as Administrator,” and then “Yes” to any window that pops up.

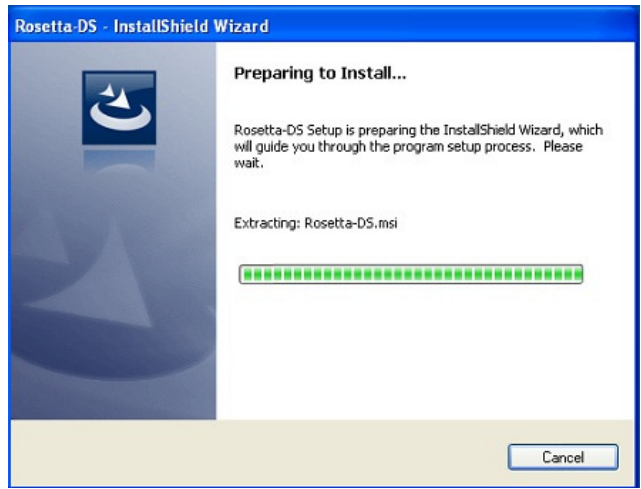
1. Download the file from the address below. Click save and save it to a location that you can access later.

<http://www.general-devices.com/files/drivers/Rosetta-DS/Software/RosettaDS-Setup.exe>

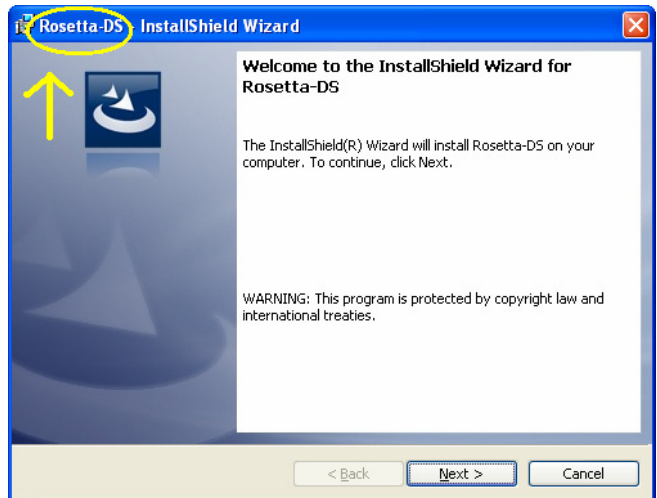
2. Run the RosettaDS-Setup.exe file from wherever it was saved earlier. You will see the window to the right appear. Click Run.



3. Wait while Rosetta-DS decompresses (Rosetta-DS.msi)



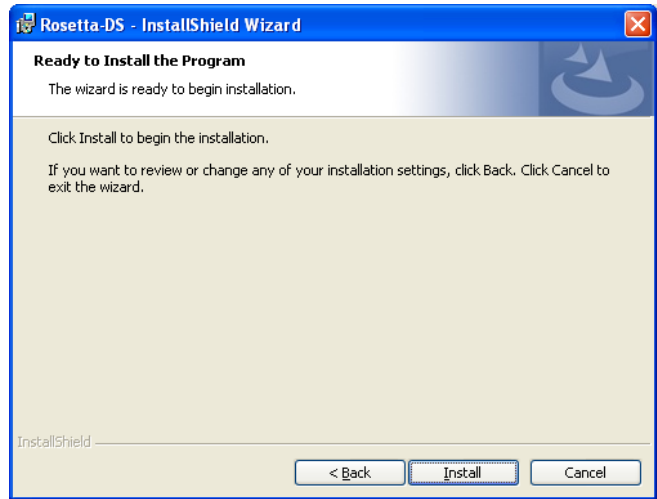
4. The Rosetta-DS Install window will appear. Click Next.



5. You will see the License Agreement window next. Check the "I accept the terms in the license agreement", then click Next.

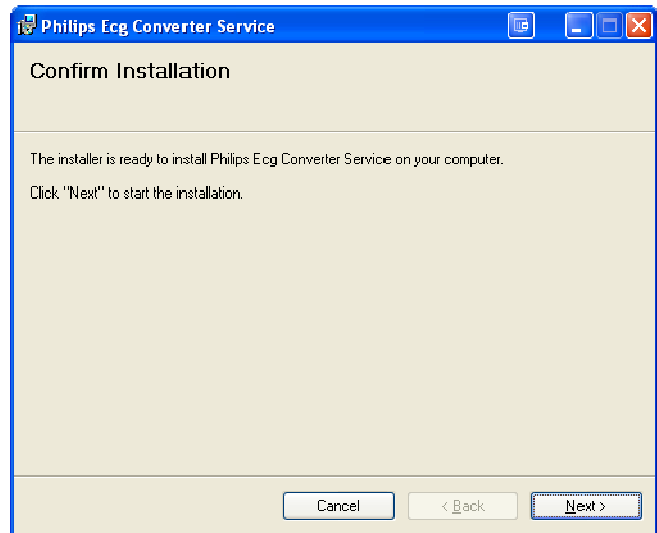


6. The Ready to Install the Program window will appear. Click Install. Wait while Rosetta-DS installs.

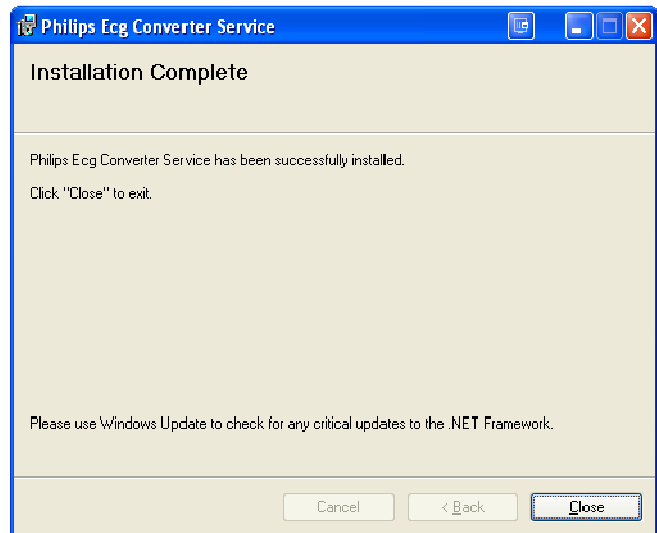


7. During the Rosetta-DS installation a Philips Ecg Converter Service window will appear. Click Next to proceed with the installation. (*Rosetta-DS installation will pause and automatically resume once the Philips Ecg Converter Service finishes installing*)

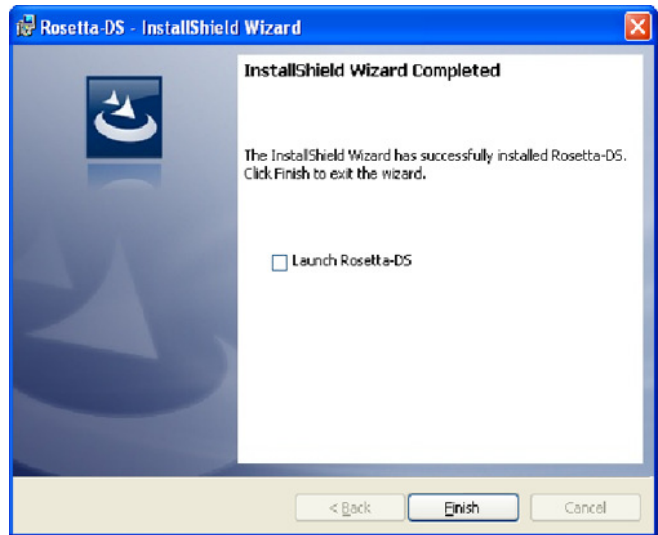
NOTE: The Philips Ecg Converter Service is required even if Philips MRx monitors will not be used with Rosetta-DS.



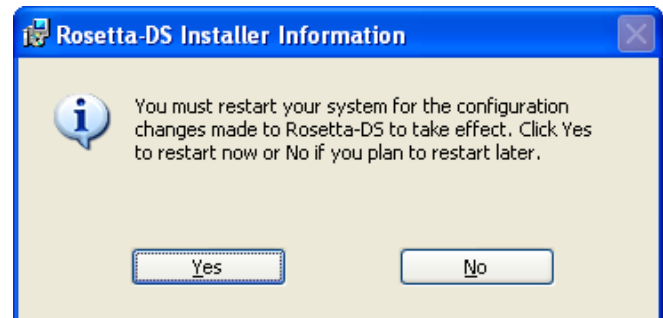
8. Once the Philips Ecg Converter Service has finished installing, click Close to finish.



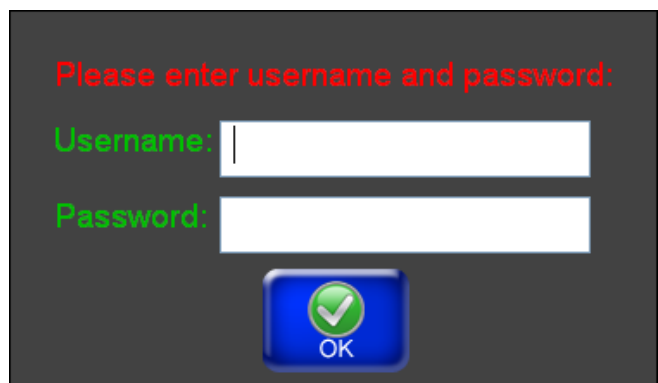
9. The Rosetta-DS Installation will now resume and finish installing. Make sure “Launch Rosetta-DS” is **not** checked and click Finish.



10. A Rosetta-DS Installer Information window will appear, asking to restart your system. Click Yes and allow the system to restart.



11. After the PC restarts, the “Please enter username and password” window will appear. Enter the username and password that were given to you by General Devices and click OK.



12. Make sure Rosetta-DS goes Online. If Rosetta-DS is Offline please contact General Devices.



-END PROCEDURE-