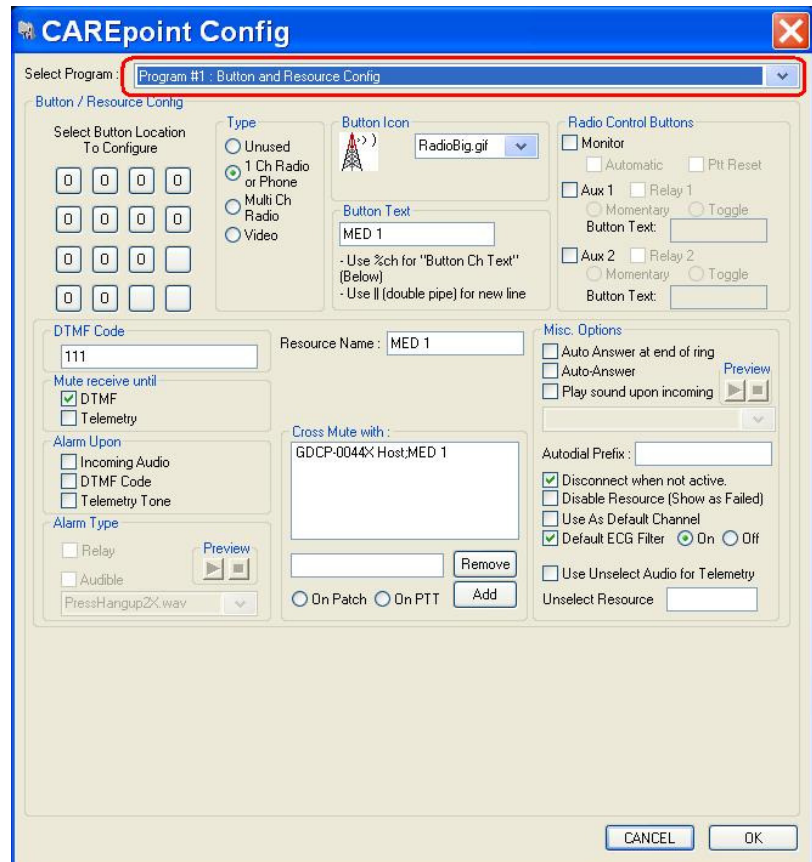


## B.24 Quick Guide #24: Setting a PIN code for CAREpoint # Codes

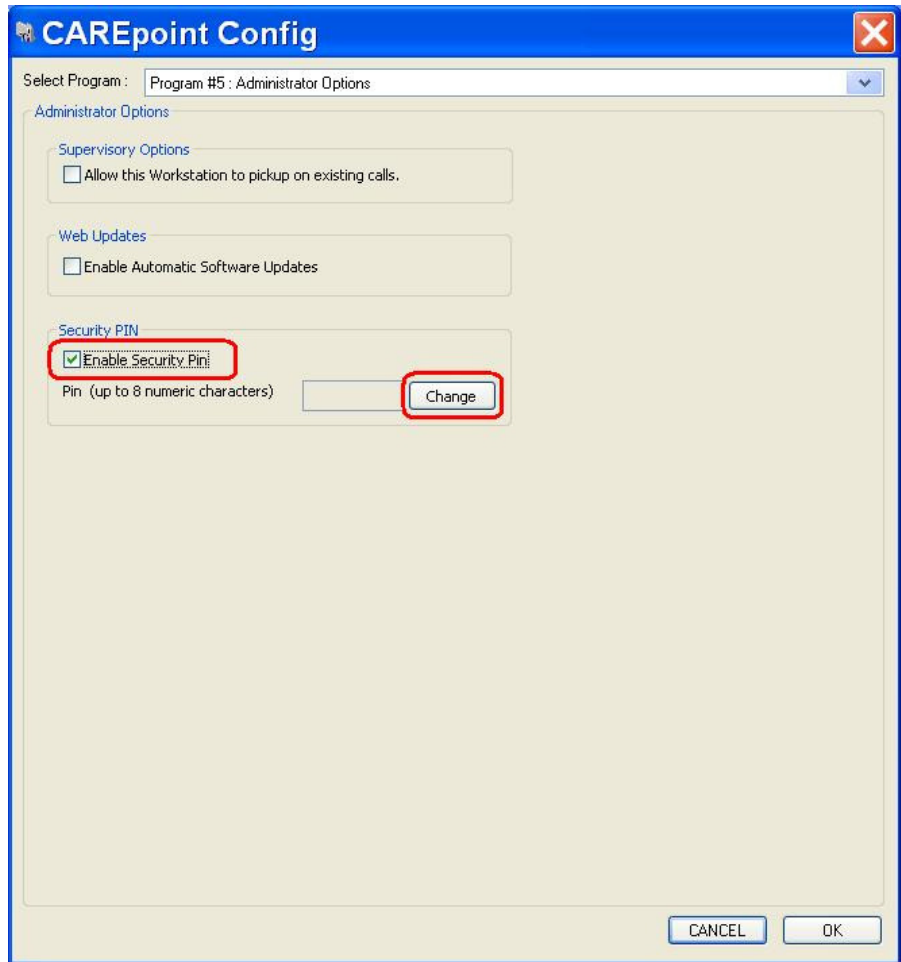
1. On the blue, on-screen keypad, type in #CONFIG (#-2-6-6-3-4-4)



2. The CAREpoint Configuration window will open. Click “Program #1: Button and Resource Config” at the top and select “Program #5: Administrator Options”



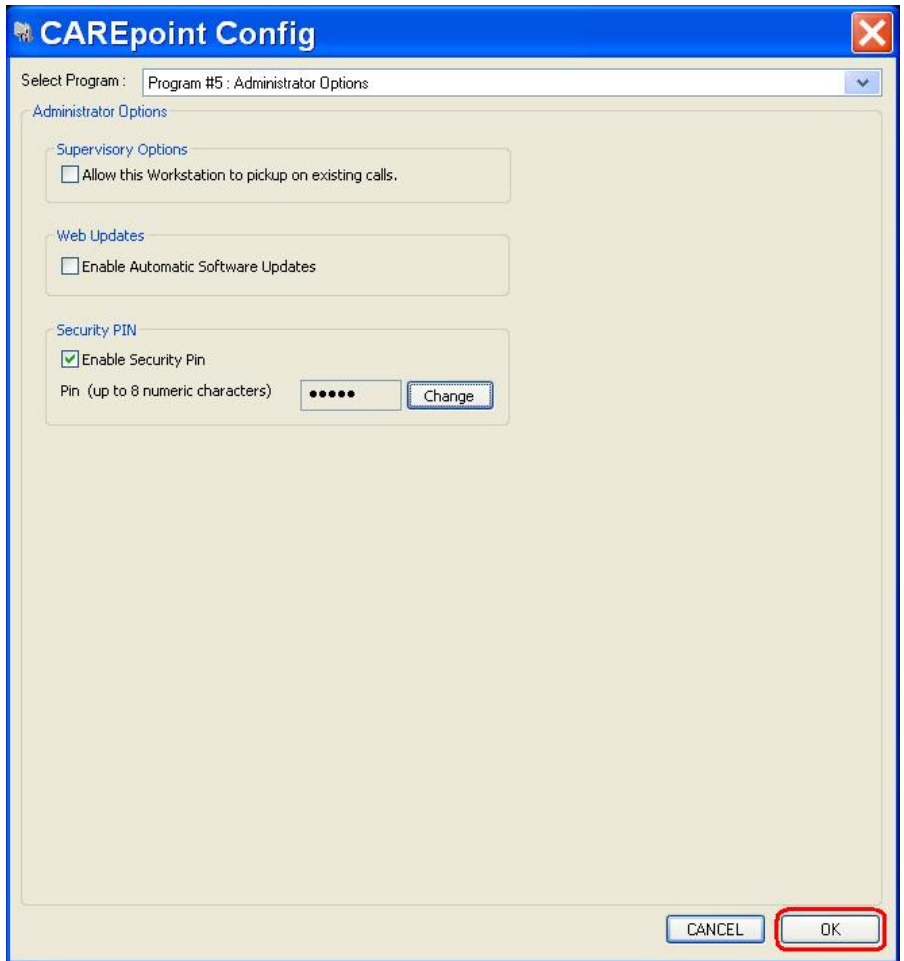
3. In this window, check the “Enable Security PIN” checkbox, and then click “Change.” This will bring up the Change PIN window.



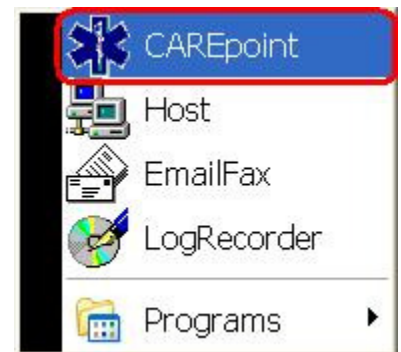
4. Leave the “Old Pin” textbox blank, and type in the desired numeric PIN in both the “New Pin” and “Verify New Pin” textboxes. The OK button will appear when the PINs match; click it when you are done to return to the CAREpoint Config window.



5. Back in the CAREpoint Config window, click the “OK” button



6. On the blue, on-screen keypad, type in #BYE (#-2-9-3), wait a moment, and restart CAREpoint by going into the Start Menu and selecting CAREpoint.



7. When CAREpoint restarts, try to enter #CONFIG (#-2-6-6-3-4-4). If this message appears, you have successfully saved your PIN code. Type it in to access any #CODE screens. It will unlock #CODEs for 10 minutes before you need to enter it again.

